

BANNOH 1500

High Solid Epoxy Universal Primer

Saving Labor Charge

High Solid

Certified by Class
Society for P.S.P.C.

Approved by F.D.A.



Universal Primer applicable for all areas !

BANNOH 1500

High Solid Epoxy Universal Primer

Saving Labor Charge

High Solid

Certified by Class Society for P.S.P.C.

Approved by F.D.A.

Innovative Coating System : Lowering VOC, Total Cost Saving & Universal Priming.

"BANNOH 1500 is a typical Universal Primer applicable for all areas including ballast water tanks, outer hull. It allows almost all different kinds of subsequent coats providing good adhesion and contributes total cost saving due to higher solid.

It is low VOC type , which contributes to the improvement of global environment and working condition, and it also provides smooth coated surface.

With the use of CMP's hydrolysis antifouling paint for hulls, it delivers fuel savings, induced by low friction between sea water and smooth coated surface."

Features

Total cost saving :
unifying priming system and simplifying coating process.

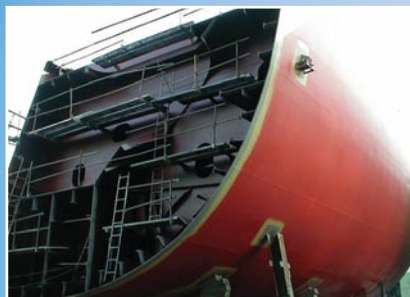
Low VOC : Environmentally Friendly

Certified by Class Society for P.S.P.C.(*)

Excellent performance of Fuel Saving combined with CMP's lower friction antifouling paint.

Approved by F.D.A.

(*) Scheduled to be approved for ballast tank and cargo oil tank in 2012



External Hull



Hold




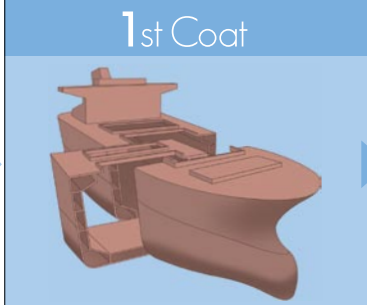
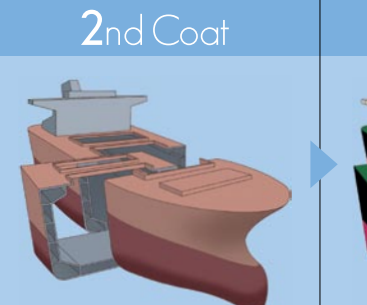

External Hull



W.B.T.

Painting Specification

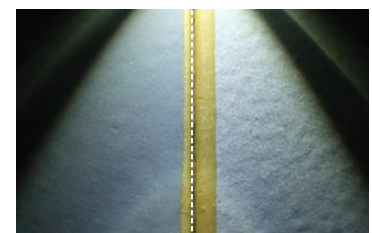
BANNOH 1500 contributes total cost saving since coating systems can be simplified applicable for most areas and high solid coating.

	Shop Primer	1st Coat	2nd Coat	Finish Coat
				
Under water external hull		BANNOH 1500	BANNOH 1500N 75~100µm	SEAFLO NEO Series * Required paint film thickness of AF: Please consult Chugoku's sales representatives.
Topside				UNYMARINE (or EPICON FINISH HB) 50µm x2
Exposed Decks				EPICON FINISH HB (or UNYMARINE) 50µm x2
Outside of accommodation area				UNYMARINE 50µm x1
Water ballast tank				BANNOH 1500 160µm
Cargo hold				

Product data (Comparison with CMP's existing product)

BANNOH 1500 allows thicker coat up to 250 microns per coat, as it is low VOC type of Epoxy Paint. As shown in the picture below, it achieves very smooth surface in combination with the use of CMP's low friction type of antifouling paints.

		BANNOH 1500	CMP's existing product
Mixing ratio (by weight)		86:14	87:13
Color		Red Brown, Light Gray, Gray, Cream	Red Brown, Gray,
Density (g/mL) ISO 2811		1.40	1.30
Film thickness (µm)	Wet	137~342	167~333
	Dry	100~250	100~200
Solid by Volume NV (%) ISO 3233		73±2	60±2
Coverage (Theoretical) (g/cm ²)		192~479	217~433
VOC (g/L)		286	415



Painted surface obliquely illuminated with light.

At temperatures below 10 degree C, BANNOH 1500 QD is recommended.

Make it efficient by utilizing IBC system

IBC
SYSTEM
Intermediate Bulk Container



IBC tank



Automatic paint blending equipment

IBC is CMP's recyclable system with automatic measuring and mixing equipment. Under the system, paints are delivered in IBC(1000L) for zero emission. This system enables reduction of used drums, loss factors, and it also brings better workability and green environmental.

Benefit of utilizing IBC

No wasting time to open drums and to mixture products by hand work.

No disposals of empty drums: It contributes to labor power saving.

No wasting unused paints adhered to empty drums.

Stable product quality with accurate measurement and proper stirring

CMP CHUGOKU MARINE PAINTS, LTD.

HEADQUARTERS

Tokyo Club Building, 2-6, Kasumigaseki 3-chome, Chiyoda-ku, Tokyo, 100-0013, Japan TEL : 81-(3)3506-5844 FAX : 81-(3)5511-8022

China

CHUGOKU MARINE PAINTS (SHANGHAI), LTD.

Room 2001, 20th Floor, Ludi Hechuang Building,
No.450 Caoyang Road, Putuo District, Shanghai, China
TEL : 86-(21)52357799 FAX : 86-(21)52360952
E-Mail : cmpshanghai@cmp.com.cn

Guangzhou Sales Office

Rm.1801, Tower B, Victory Plaza, No. 103-1,
TiYu Road West, Guangzhou City, Guangdong, China
TEL : 86-20-8523-6309 FAX : 86-20-8516-0806
E-Mail : cmpgdsales@cmp.com.cn

CHUGOKU MARINE PAINTS (GUANGDONG), LTD.

Industrial Development Area, Lunjiao, Shunde,
Foshan, Guangdong, China
TEL : 86-757-27733451 FAX : 86-757-27733452

Hong Kong

CHUGOKU MARINE PAINTS (HONG KONG), LTD.

Room 01, 22nd Floor, Island Place Tower,
510 King's Road, North Point, Hong Kong
TEL : 852-2576 6376 FAX : 852-2576 3607
E-Mail : marine@cmp-hk.com.hk

Taiwan

CHUGOKU MARINE PAINTS (TAIWAN), LTD.

5F-2, Shen Hsiang Tang Building, No.146,
Sung Chiang Road, Taipei, Taiwan
TEL : 886-(2) 2511-0106 FAX : 886-(2) 2571-0618
E-Mail : cmptpe@ms19.hinet.net

Indonesia

P.T. CHUGOKU PAINTS INDONESIA

8F, Midplaza 1 Bldg., Jalan Jendral Sudirman
Kav 10-11, Jakarta, Indonesia
TEL : 62-(21)5700515 FAX : 62-(21)5733787
E-Mail : firdaus_hansi@chugoku.co.id

India

CHUGOKU PAINTS (INDIA) PRIVATE LIMITED

802, Embassy Centre, Nariman Point, Mumbai, Maharashtra, India
TEL : 91-22-43550600 FAX : 91-22-43550625
E-Mail : sales@cmpindia.net

Korea

CHUGOKU SAMHWA PAINTS, LTD.

Bosaeng Bldg. 2F, 134-8, Gamjeon-Dong, Sasang-Gu, Busan, Korea
TEL : 82-51-329-3377 FAX : 82-51-329-3388
E-Mail : cspaint@cspp.co.kr

Malaysia

CHUGOKU PAINTS (MALAYSIA) SDN. BHD.

902, Menara PJ, AMCORP Trade Center, No.18, Persiaran Barat,
Petaling Jaya, Selangor Darul Ehsan, Malaysia
TEL : 60-(3)79564373 FAX : 60-(3)79560219
E-Mail : cmpmj@cmp.com.my

Singapore

CHUGOKU MARINE PAINTS (SINGAPORE) PTE. LTD.

22 Tuas Street, Singapore
TEL : 65-6861-6500 FAX : 65-6861-3002
E-Mail : salesmarine@cmpsin.com.sg

Thailand

TOA-CHUGOKU PAINTS CO.,LTD.

159 Sermmit Tower, 19th floor, Soi Sukhumvit 21,
Sukhumvit Road, Klongtoey Nua, Bangkok, Thailand
TEL : 66-(2)2602701 FAX : 66-(2)2602700
E-Mail to: mkmtm@toa-chugoku.com

U. A. E.

CHUGOKU MARINE PAINTS (SINGAPORE) PTE. LTD.

Dubai Branch
Shipping Tower 1st Floor, Al Mina Road, Al Rifa'a,
P.O.Box 464, Dubai, United Arab Emirates
TEL : 971-4-393-8236 FAX : 971-4-393-4268
E-Mail : tamura@cmpdubai.ae

Germany

CHUGOKU PAINTS (GERMANY) G.m.b.H.

Johannisbollwerk 19, Hamburg, Germany
TEL : 49-40-317-964-80 FAX : 49-40-317-964-76
E-Mail : mailbox-de@cmpeurope.eu

Greece

CHUGOKU MARINE PAINTS (HELLAS), S.A.

8 Kanari Street, Piraeus, Greece
TEL : 30-(210)4522489 FAX : 30-(210)4180868
E-Mail : cmp-hellas@cmpeurope.eu

Netherlands

CHUGOKU PAINTS B.V.

Sluisweg 12, Heijningen, Netherlands
(P.O.Box 73, Fijnaart, 4793ZH Netherlands)
TEL : 31-(167)526100 FAX : 31-(167)522059
E-Mail : sales@cmpeurope.eu

U.K.

CHUGOKU PAINTS (UK) LIMITED

Godliman House, 21 Godliman Street, London, U. K.
TEL : 44-(0)20-7778-0021 FAX : 44-(0)20-7489-7302
E-Mail : mailbox-uk@cmpeurope.eu

U.S.A.

CMP COATINGS, INC.

1610 Engineers Road, Belle Chasse, Louisiana, U.S.A.
TEL : 1-(504) 392-4817 FAX : 1-(504) 392-2979
E-Mail : cmpcoatings@worldnet.att.net

Website: <http://www.cmp.co.jp>

Issue date October 2011

The information given in this sheet is effective at the date shown above and subject to revision from time to time without notice.